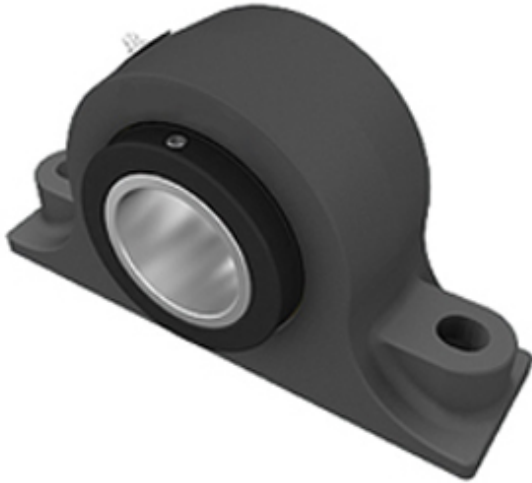




BEARING CORP.OF CANADA LTD.

1.5 Inch | 38.1 Millimeter x 3.375 Inch | 85.725
 Millimeter x 2.125 Inch | 53.98 Millimeter
TIMKEN E-P2B-TRB-1 1/2 Pillow Block Bearings



Bearing No. E-P2B-TRB-1 1/2

E-P2B-TRB-1 1/2 Bearing 2D drawings and 3D CAD models

Category	Pillow Block Bearings
Inventory	10.0
Manufacturer Name	TIMKEN
Minimum Buy Quantity	N/A
Weight	4.91
EAN	0053893606637
Product Group	M06288
Number of Mounting Holes	2
Mounting Method	Concentric Collar
Housing Style	2 Bolt Pillow Block
Rolling Element	Tapered Roller Bearing
Housing Material	Cast Iron
Expansion / Non-expansion	Non-expansion
Mounting Bolts	1/2 Inch
Relubricatable	Yes
Seals	Double Lip Radial
Housing Configuration	1 Piece Solid
Inch - Metric	Inch
Other Features	Double Row Wide Inner Race With Set Screw
Long Description	2 Bolt Pillow Block; 1-1/2" Bore; 2-1/8" Base to Center Height; Concentric Collar Mount; Tapered Roller Bearing; 6-1/8" Minimum Bolt Spacing; 6-3/8" Bolt Spacing Maximum;



BEARING CORP.OF CANADA LTD.

	Relubrica
Category	Pillow Block
UNSPSC	31171511
Harmonized Tariff Code	8483.20.40.80
Noun	Bearing
Keyword String	Pillow Block
Manufacturer URL	http://www.timken.com
Manufacturer Item Number	E-P2B-TRB-1 1/2
Weight / LBS	10
d	1.5 Inch 38.1 Millimeter
Actual Bolt Center to Center	0 Inch 0Millimeter
Nominal Bolt Center to Center	5.9 Inch 150 Millimeter
Bolt Spacing Maximum	6.375 Inch 161.925Millimeter
D	3.375 Inch 85.725 Millimeter
B	2.125 Inch 53.98 Millimeter
Bolt Spacing Minimum	6.125 Inch 155.575Millimeter
Shaft Size	1.5 in
Shaft Size Type	Imperial
Weight	10 lb
UPC Code	053893606637
Dimension B	3-3/8 in
Dimension L	7-7/8 in
Dimension A	2-3/8 in
Dimension J Min.	6-1/8 in
Dimension J Max.	6-3/8 in
Bolt Diameter	1/2 in
Dimension N	5/8 in
Dimension N ₁	3/4 in



BEARING CORP.OF CANADA LTD.

Dimension H ₁	1-1/4 in
Dimension H ₂	4-1/4 in
Dimension d ₁	3-3/16 in
Dimension H	2-1/8 in
e	0.44
X (if F _a /F _r ≤ e)	0.87
Y (if F _a /F _r ≤ e)	1.96
X (if F _a /F _r > e)	0.7
Y (if F _a /F _r > e)	2.37
K Factor	1.36
C ₉₀ Dynamic Load Rating ¹	7860 lb
C ₀ Static Load Rating	33000 lb
F _{a-max} Maximum Permissible Thrust Load ²	2590 lb
F _{r-max} Maximum Allowable Slip Fit Radial Load ³	6400 lb
Max. Speed ⁴	3320 rpm
Note	Note: All units have a 1/8 pipe thread grease fitting The Maximum Permissible Thrust Load applies to conditions of slip fit with set screw mounting or in applications where a large moment loading occur