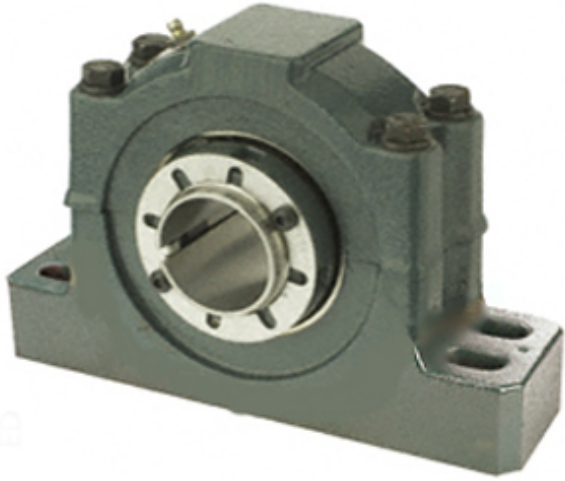




BEARING CORP.OF CANADA LTD.



6 Inch | 152.4 Millimeter x 7.078 Inch | 179.781
Millimeter x 7.063 Inch | 179.4 Millimeter DODGE
P4B534-ISAF-600R Pillow Block Bearings

Bearing No. P4B534-ISAF-600R

P4B534-ISAF-600R Bearing 2D drawings and 3D CAD
models

Category	Pillow Block Bearings
Inventory	0.0
Manufacturer Name	ABB MOTORS AND MECHANICAL INC
Minimum Buy Quantity	N/A
Weight	147.55
EAN	0782475222971
Product Group	M06288
Number of Mounting Holes	4
Mounting Method	Adapter Sleeve
Housing Style	4 Bolt Pillow Block
Rolling Element	Spherical Roller Bearing
Housing Material	Cast Iron
Expansion / Non-expansion	Non-expansion
Mounting Bolts	1 Inch
Relubricatable	Yes
Insert Part Number	INS-IP-600R
Seals	Triple Lip Contact
Housing Configuration	2 Piece Split
Inch - Metric	Inch
Other Features	Double Row Has Flinger
Long Description	4 Bolt Pillow Block; 6" Bore; 7-1/16" Base to Center Height; Adapter Sleeve Mount; Spherical Roller Bearing; 19-3/8" Minimum



BEARING CORP.OF CANADA LTD.

	Bolt Spacing; 21-5/8" Bolt Spacing Maximum; Relubricata
Category	Pillow Block
UNSPSC	31171511
Harmonized Tariff Code	8483.20.40.80
Noun	Bearing
Keyword String	Pillow Block
Manufacturer URL	http://www.dodge-pt.com
Manufacturer Item Number	P4B534-ISAF-600R
Manufacturer Internal Number	037909
Weight / LBS	325
D	7.078 Inch 179.781 Millimeter
Bolt Spacing Minimum	19.375 Inch 492.125Millimeter
d	6 Inch 152.4 Millimeter
Bolt Spacing Maximum	21.625 Inch 549.275Millimeter
B	7.063 Inch 179.4 Millimeter
Nominal Bolt Center to Center	20.5 Inch 520.7 Millimeter
Actual Bolt Center to Center	0 Inch 0Millimeter